

## Certified professionals. Proudly partnered.

### MICROSOFT CERTIFIED PARTNER

The Microsoft Certified Partner Program is a widely recognized, worldwide program for independent companies that provide Microsoft-based IT services and products to corporate, government, and small- or medium-sized businesses. Partners encompass a broad range of technical expertise, including specialized disciplines such as e-commerce, networking, collaboration, and more.

As a Microsoft Certified Partner, Net2 Technology Group has been recognized for providing clients with tier-one support and partner-level insight into new products and technologies, and for providing Microsoft-based IT services and products. We have also been acknowledged for our strong commitment to emerging technology and for providing excellence in customer solutions.

Net2 Technology Group has on-staff Microsoft Certified Premier Professionals who have proven a high degree of competency in their business relationships with Microsoft product customers.



680 Louis Drive  
Warminster, PA 18974  
888-934-NET2  
215-328-9000  
Fax: 215-328-0213  
[www.net2tg.com](http://www.net2tg.com)



**WE SAVE THE DAY BEFORE  
IT NEEDS TO BE SAVED**



From the Desk of James A. Canale

Net2 Technology Group was founded on the premise that technology, paired with the right people, skills and vision, can keep your business in stride with a world that changes by the minute. When it comes to your business, we understand that technology solutions aren't just about implementation. Successful solutions involve changing the way people work and the way they manage business information.

A technology offering has to be user-friendly in order to benefit your company, so we use a Plan-Build-Manage approach to ensure that your technology investments pay off in the form of greater workplace efficiency and productivity.

As a Consultancy, we specialize in business technology transformation, digital strategy development and workflow process improvement, while capitalizing on your existing technology investments, processes and people. We take client care to new levels and we're sure you'll be impressed by our wide variety of service options, customized to suit your company's needs.

Our firm retains only the most talented systems engineers and network architects in the region, experts who can handle business technology projects promptly and effectively. We take on your projects from planning through implementation, and ensure that crucial knowledge transfer takes place.

Firms such as Jefferson Health System, The Prudential, and Rohm & Haas are just a few of the Delaware Valley elite who have relied on our ability to deploy infrastructure systems. Others like Dentaurum, Domus Advertising & Marketing, and Argent Trading are among our extremely satisfied customers and can attest to our ability to deliver quality service and workmanship, time and again.

We appreciate your interest in Net2 Technology Group and look forward to partnering with you on future projects. Together we can conquer the technology challenges to come.

Regards,



James A. Canale  
President & CEO  
Net2 Technology Group



## We make it our business to understand yours.

Since 1995 Net2 Technology Group has been providing technology skills, solutions and consulting services to businesses throughout the Greater Philadelphia, Delaware Valley and New York City regions. We have deployed networks around the globe. Headquartered in Warminster, PA, we are local to the Philadelphia, Horsham, Fort Washington and King of Prussia business campus areas.

As a technology solutions provider, we make it our business to know how yours works, so that we can plan for and implement long-term, profitable solutions. Whether you have fifty or five thousand users, Net2 Technology Group can handle all of your technology needs from start to finish.

We offer the highest quality network, operating system, business application, shared data and workflow services and expertise available. We make interoperability a first-level objective and we rely on a variety of technology combinations to meet individual client needs. We also provide careful monitoring and maintenance of your systems to keep things running smoothly at all times.

At whatever service level you require, Net2 Technology Group aims to be a virtual extension of your business - a technology partner you can depend on.

## Customized solutions for today. Vision and scalability for tomorrow.

### TECHNOLOGY CONSULTING SERVICES

As one of the Delaware Valley's premier technology consulting teams, Net2 Technology Group offers a full range of consulting services, from network design to business needs analysis. Our firm recognizes that successful technology consulting calls for adaptive personnel, foresight of changes in technology, and an ability to respond quickly.

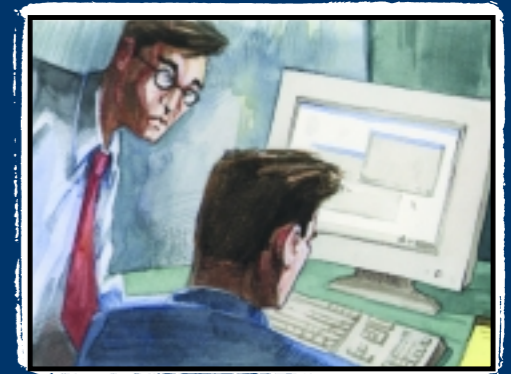
That's why we require our highly skilled team to possess Microsoft Certified Systems Engineer (MCSE), Novell Certified Netware Engineer (CNE), and/or Cisco Certified Network Professional (CCNP) designations.

We offer short-term and full-time technical personnel, specialized in everything from LAN/WAN architecture planning, design and integration, to collaboration platform planning and design, desktop design, deployment and migration, and compatibility and interoperability testing. Our team also provides administrative, help desk and multilevel support services.

We understand your company's individual technology needs and deliver customized solutions that will work today and are scalable for tomorrow.

*"OUR LONDON OFFICE WAS GROWING BUT ITS INFRASTRUCTURE WAS ALMOST NONEXISTENT. NET2 TECHNOLOGY GROUP CREATED THE BEST OF BOTH WORLDS: COMPLETE INTEGRATION WITH OUR NEW YORK OPERATIONS, BUT ALSO THE NECESSARY SEPARATION FOR LONDON-SPECIFIC INFORMATION. THEY DID MUCH OF THE CONFIGURATION WORK REMOTELY, WHICH REALLY LOWERED OUR COSTS."*

*L. MARK STONE  
SENIOR VICE PRESIDENT &  
CHIEF INFORMATION OFFICER  
ARGENT TRADING LLC*



## Skilled specialists when you need them.

Net2 Technology Group has no "bench consultants". For every company and every job, we hand-select IT professionals who possess the exact skills that you need. We have developed a database of more than 1000 names of reliable IT experts from all over the Delaware Valley and New York that we count on to deliver superior service and expertise.

Look to us when you need IT talent on a short/long-term, part/full-time basis for:

- > Projects that require expertise in new technology and systems
- > Projects that require specialized skill sets
- > Large migrations and relocation projects
- > Hiring fully screened full-time employees
- > Help Desk staffing

Whether you need us as a helping hand during peak deployment periods, or you're simply faced with a shortage of qualified IT professionals, you can rest assured that you'll get the same high-quality service from our short-term and contract help that you'll get from our long-term specialists.

We also make sure that your employees are adequately trained on new technologies introduced to your work environment. We provide your company with "best of breed," instructor-led, on-site training, customized to meet your company's technology training goals. We leave the training materials, labs and 3rd party materials behind for your students to use again and again.

## Expert administration. Low cost. No overhead.

### SUPPORT SERVICES

Your computing environment requires high-quality maintenance in order to function at its best. But chances are you don't have the time and resources to dedicate to systems monitoring and routine server maintenance. Net2 Technology Group takes a proactive approach to systems maintenance and guarantees you'll be getting optimal performance from your network.

Our PLUS<sup>LITE</sup> and PLUS<sup>MAX</sup> suite of services gives you the benefit of having

dedicated, long-term administrators at a fraction of the cost of having a single, salaried employee. In many cases, we are already familiar with your network and we can provide LAN/WAN, intranet or extranet support on any network we've built or certified.

We deliver a host of preventive and ongoing maintenance services at reduced rates, and as a PLUS participant you'll also benefit from discounted rates on other Net2 Technology Group services.

## High speed. High capacity. Guaranteed uptime. We get you connected in all the ways you need to be.

### CORPORATE INTERNET SERVICES

For business-critical operations like yours, Net2 Technology Group has rigorously engineered a high-capacity, redundant Internet backbone with robust peering arrangements with other providers.

You can depend on us for secure and private, always-on, high-speed, corporate Internet connection service. In fact, we're so confident in our network and our ability to bring you the most dependable Internet service that we offer one of the best Service Level Agreements in the industry.

Net2 Technology Group also provides end-to-end website development and maintenance, and we support a wide range of technologies and Web-based services.

### SHARED HOSTING - THE POWER OF WINDOWS

We offer the best in Windows 2000 and Next Generation Windows .NET shared hosting services, the most cost-effective way to manage your Web server environment. You also have the comfort of knowing that our servers undergo monitoring and management by our Network Operations Center (NOC) staff, 24x7x365.

*"NET2 TECHNOLOGY GROUP HAS SAVED US SO MANY DOLLARS BY DOING IT RIGHT THE FIRST TIME AND NOT TAKING SHORTCUTS. I CONSIDER THE DAY WE STARTED DEALING WITH THEM ONE OF MY LUCKIER DAYS."*

*JOSEPH K. FRYE  
CHIEF FINANCIAL OFFICER  
BREEN COLOR CONCENTRATES*



## Your systems and ours. Safe, secure, fully-monitored.

### CO-LOCATION SERVICES

Net2 Technology Group's co-location facilities exceed industry security standards. Our Co-location Center was designed to protect your equipment and systems, and to accommodate any combination of space and security requirements.

Our facilities are equipped to provide Internet access services for e-commerce and other mission-critical, Internet-based applications. We also have multiple strategic relationships that provide cutting-edge access and bandwidth solutions, up to 50 GBps.

Net2 Technology Group has incorporated the best environmental controls and monitoring systems in the industry to ensure our systems and yours are operating at 100% efficiency. All power systems in the Co-location Center are automatic and monitored by our Network Operations Center (NOC) 24x7x365.

We back up our commitment to you and your business with a 99.99% Uptime Guarantee that will put your mind at ease.

Our pricing is flexible and packaged per project.

## We make it our business to understand yours.

Since 1995 Net2 Technology Group has been providing technology skills, solutions and consulting services to businesses throughout the Greater Philadelphia, Delaware Valley and New York City regions. We have deployed networks around the globe. Headquartered in Warminster, PA, we are local to the Philadelphia, Horsham, Fort Washington and King of Prussia business campus areas.

As a technology solutions provider, we make it our business to know how yours works, so that we can plan for and implement long-term, profitable solutions. Whether you have fifty or five thousand users, Net2 Technology Group can handle all of your technology needs from start to finish.

We offer the highest quality network, operating system, business application, shared data and workflow services and expertise available. We make interoperability a first-level objective and we rely on a variety of technology combinations to meet individual client needs. We also provide careful monitoring and maintenance of your systems to keep things running smoothly at all times.

At whatever service level you require, Net2 Technology Group aims to be a virtual extension of your business - a technology partner you can depend on.

## From the Desk of James A. Canale

Net2 Technology Group was founded on the premise that technology, paired with the right people, skills and vision, can keep your business in stride with a world that changes by the minute. When it comes to your business, we understand that technology solutions aren't just about implementation. Successful solutions involve changing the way people work and the way they manage business information.

A technology offering has to be user-friendly in order to benefit your company, so we use a Plan-Build-Manage approach to ensure that your technology investments pay off in the form of greater workplace efficiency and productivity.

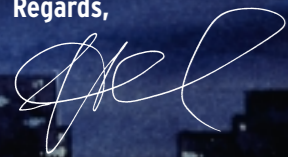
As a Consultancy, we specialize in business technology transformation, digital strategy development and workflow process improvement, while capitalizing on your existing technology investments, processes and people. We take client care to new levels and we're sure you'll be impressed by our wide variety of service options, customized to suit your company's needs.

Our firm retains only the most talented systems engineers and network architects in the region, experts who can handle business technology projects promptly and effectively. We take on your projects from planning through implementation, and ensure that crucial knowledge transfer takes place.

Firms such as Jefferson Health System, The Prudential, and Rohm & Haas are just a few of the Delaware Valley elite who have relied on our ability to deploy infrastructure systems. Others like Dentaurum, Domus Advertising & Marketing, and Argent Trading are among our extremely satisfied customers and can attest to our ability to deliver quality service and workmanship, time and again.

We appreciate your interest in Net2 Technology Group and look forward to partnering with you on future projects. Together we can conquer the technology challenges to come.

Regards,



James A. Canale  
President & CEO, Net2 Technology Group

